

TGB Microturbine Micro-CHP system

Turbo Green Boiler Generates 3 kW Electrical and 17 kW Thermal Power

Key Features

- Highly reliable
- Minimal maintenance
- Wall-hung packaging
- Coaxial air / flue piping
- Integrated Grid-Tie Inverter
- Proven oil-lubricated bearing
- Simple display and user interface
- Heat driven automatic control system

Performance

Power output	2.9	kW
Heat output	17	kW
Overall efficiency	95*	%
Rotor speed	170,000	rpm

* Including some HHV latent heat recovered from the fuel input

Fuel

Fuel type	Natural gas	G20
Fuel consumption (LHV)	21	kW

Emissions @ 100% load

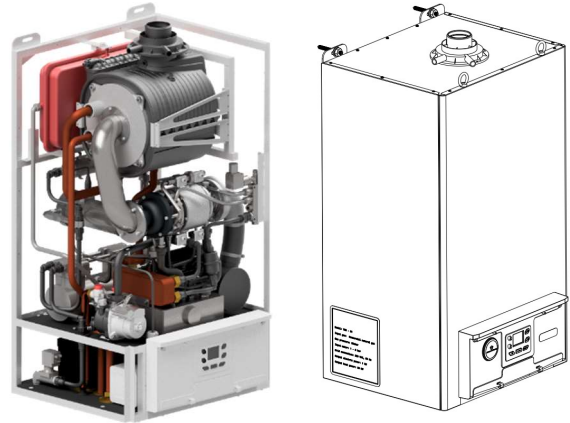
NO _x (class 5)	< 18	ppm @15% O ₂
CO	< 300	ppm @15% O ₂
CO ₂ savings	900	kg/year
Noise	< 50	dB (A) 1m

Installation

Dimensions (HxWxD)	950 x 550 x 450	mm
Weight (empty)	80 (70)	Kg
Gas connection	22 (3/4)	mm (In)
Water connection	22 (3/4)	mm (In)
Grid connection	230 / 50	VAC, Hz

Operating Life

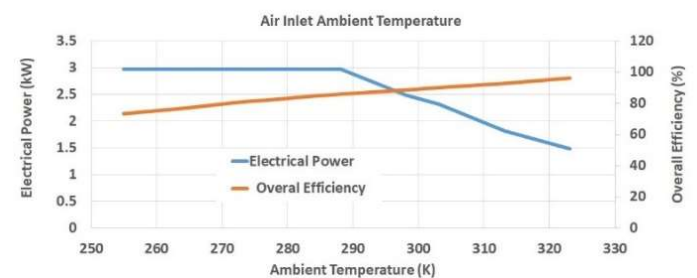
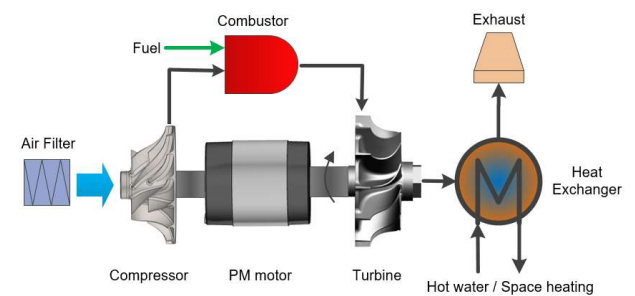
Service intervals	5,000	hours
Overhaul	25,000	hours
Design life	50,000	hours

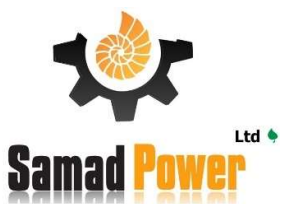
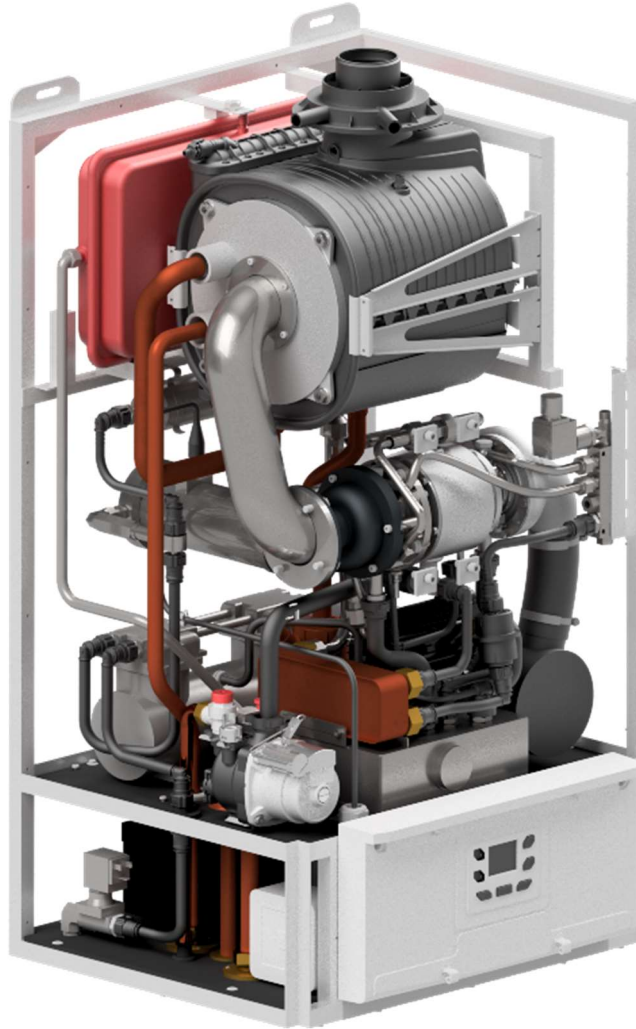


Microturbine Engine Design

- Single shaft micro gas turbine engine
- Centrifugal compressor & radial turbine
- Permanent magnet motor/generator
- Proven oil bearing technology
- Quiet and no vibrations
- Remote monitoring

Microturbine Engine Cycle





9 Centurion Court, Brick Close
Kiln Farm, Milton Keynes
MK11 3JB, UK

Tel: +44 (0)1908 260 688
info@samad-power.co.uk
www.samad-power.co.uk